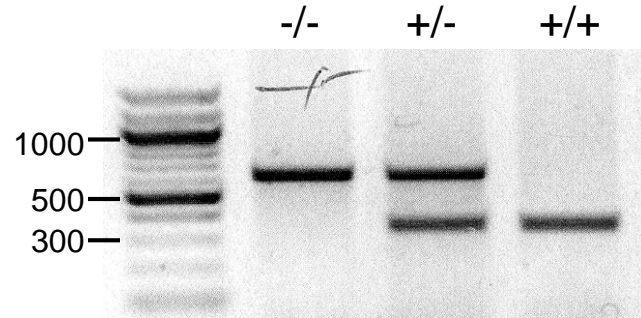




# Msy2 genotyping



## Primers:

18704/ 18705 - WT allele

18705/ 18706 – KO allele

**18704 (F):** 5'-GGA GGG AGA AGG GGA CAT T-3'

**18705 (R):** 5'-GCA GAA CAG GAT GGG TTG TT-3'

**18706 (F):** 5'-TTT GTA CTT TAG AAA TGT CAG TTG CT-3'

## PCR (PureTaq RTG beads #407513-STR)

0.3  $\mu$ l of each 20 $\mu$ M primer, water (to 25  $\mu$ l), 2  $\mu$ l DNA

## PCR program

94°C - 2min

94°C - 50sec, 57°C - 50sec, 72°C - 50 sec (27 cycles)

72°C - 7min

4°C -  $\infty$